

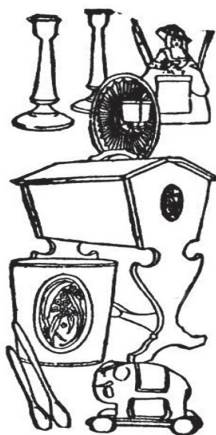
ADDITIONAL RULES AND REGULATIONS GOVERNING THE HOME ECONOMICS DEPARTMENTS

THESE RULES ARE IN ADDITION TO GENERAL RULES IN THIS BOOK!

1. READ General Rules in front of this book! All rules apply to this department.
2. Articles for exhibition in the Creative Arts Building will be accepted between 3 p.m. and 7 p.m. on the Tuesday before start of fair on Wednesday.
3. Any one article may not be entered in more than one classification.
4. Any article entered will be judged according to quality.
5. Blue Ribbons are designated for first premium, red ribbons for second premium, white ribbons for third premium and Royal Blue Rosettes for Championships.
6. Creative Arts Building will close doors at 6:30 p.m., on Sunday the last day the advertised fair to prepare for release time. Articles can be picked up at 7 p.m. on Sunday evening or Monday from 9-10 a.m. in accordance with rules and regulations covering State Aid to County Fairs.
7. Ticket stubs must be presented when articles are picked up from the Creative Arts Building. NO EXCEPTIONS!
8. Creative Arts Building will be closed on the day of judging until 1:00 p.m.
9. All articles must be exhibited by the person who made and/or grew the product.

ENTRY QUESTIONS IN THE CREATIVE ARTS DEPARTMENT PLEASE CALL:

DONNA SPARENBERG815-939-2635
SUE LAMB815-933-1385
JANE LUEDTKE815-932-7592
JEROME CHRISTESEN815-937-0248



DEPARTMENT (J) #110 - FARM CROPS

Superintendent **Aimee Uphoff**
Asst. Superintendents **Jackie Uphoff**

AMOUNT OFFERED - \$298.00

In place by 8:00 a.m.
 Judging - Wednesday at 9:00 a.m.
 Entry Fee - \$1.00

All grains and seeds competing for premiums MUST be exhibited by the producer and MUST be grown in the year in which it is exhibited unless this year's crops are not ready for harvest. Bundles of grain should be no less than 4" and no greater than 5" in diameter. Scored and chipped grain barrred.

Dept. #110 CLASS A

LOT

1	Corn - Any Color, Most Freakish	7.00	5.00	4.00
2	Corn - Yellow, Shelled, 1 Gallon.....	7.00	5.00	4.00
3	Corn - Best Single Stalk	7.00	5.00	4.00
4	Corn - Tallest Single Stalk (ears on).....	7.00	5.00	4.00
5	Corn - Best Three Stalks (ears on)	7.00	5.00	4.00
6	Corn - Indian, 6 Ears	7.00	5.00	4.00
7	Corn - Sweet, 6 Ears	7.00	5.00	4.00
8	Alfalfa - Fresh Cut, 4" Thick Slice (in plastic bag).....	7.00	5.00	4.00
9	Oats - White, 1 Gallon.....	7.00	5.00	4.00
10	Oats - 1 Bundle	7.00	5.00	4.00
11	Popcorn - Any color, 6 Ears.....	7.00	5.00	4.00
12	Red Clover - 1 Bundle.....	7.00	5.00	4.00
13	Rye - 1 Bundle.....	7.00	5.00	4.00
14	Soybeans with Pods - 1 Bundle	7.00	5.00	4.00
15	Soybeans - Any variety, 1 Gallon	7.00	5.00	4.00
16	Soybeans - Green, 1 Bundle.....	7.00	5.00	4.00
17	Wheat - Hard, 1 Gallon	7.00	5.00	4.00
18	Wheat - Non Bearded, 1 Bundle	7.00	5.00	4.00

Best of Show Overall - Rosette & \$10.00



DEPARTMENT (K) #111 - FRUITS & VEGETABLES

Superintendent.....Casey Hull

Asst. Superintendents.....Jessica Meyer

AMOUNT OFFERED - \$680.00

In place by 8:00 a.m.

Judging - Wednesday at 9:00 a.m.

Entry Fee - \$1.00

All produce competing for premiums must be exhibited by the producer and must be grown in the year in which it is exhibited unless this year's crop are not ready for harvest. All items must be 6 each, labeled and on a plate unless otherwise noted. All items may be cut and tasted. ***Display must be an assortment of no less than 15 or more than 20 variety vegetables. To be judged for quality, edibility, uniformity, etc... Display must be in a decorated bushel basket.*

Dept. #111

CLASS A

LOT

1	Apples - Summer, any variety in basket.....	7.00	5.00	4.00
2	Beans - Green	7.00	5.00	4.00
3	Beans - Yellow	7.00	5.00	4.00
4	Beets - Table.....	7.00	5.00	4.00
5	Broccoli - 1 Stalk	7.00	5.00	4.00
6	Cabbage - 1 Head.....	7.00	5.00	4.00
7	Carrots.....	7.00	5.00	4.00
8	Egg Plant 3 Regular - Blk Beauty	7.00	5.00	4.00
9	Corn - Sweet, any variety	7.00	5.00	4.00
10	Cucumbers - Dill, (4" in length)	7.00	5.00	4.00
11	Cucumbers - Pickling, (2 1/2" in length)	7.00	5.00	4.00
12	Cucumbers - Slicing	7.00	5.00	4.00
13	Herb - Any Kind (6 Stems Bundled)	7.00	5.00	4.00
14	Herb - Variety of Bunches in Basket	7.00	5.00	4.00
15	Honey - Extracted Light (1 Jar)	7.00	5.00	4.00
16	Honey - Extracted Dark (1 Jar)	7.00	5.00	4.00
17	Honey Comb - Clear Pkgd. 1 LB.....	7.00	5.00	4.00
18	Freakish Vegetable	7.00	5.00	4.00
19	Kohlrabi - 1 each	7.00	5.00	4.00
20	Squash - Any Kind (3 each)	7.00	5.00	4.00
21	Melon - Watermelon (1 each).....	7.00	5.00	4.00
22	Melon - Muskmelon (1 each).....	7.00	5.00	4.00
23	Onions - Yellow.....	7.00	5.00	4.00
24	Onions - Green, Untrimmed	7.00	5.00	4.00
25	Onions - Any Other Color	7.00	5.00	4.00
26	Peppers - Banana	7.00	5.00	4.00
27	Pepper Novelty - Variety 6 in basket.....	7.00	5.00	4.00
28	Peppers - Hot, Small	7.00	5.00	4.00
29	Peppers - Sweet with stem	7.00	5.00	4.00
30	Potatoes - Any Kind.....	7.00	5.00	4.00
31	Potato - Variety of 6 in basket	7.00	5.00	4.00
32	Tomato Novelty - Variety 6 in a basket.....	7.00	5.00	4.00
33	Pumpkin - Field (1 each)	7.00	5.00	4.00
34	Tomatoes - Red, Ripe (with stems)	7.00	5.00	4.00
35	Tomatoes - Yellow, Ripe (with stems).....	7.00	5.00	4.00
36	Tomatoes - Red Cherry (1 Pint Box with stems).....	7.00	5.00	4.00
37	Zucchini Squash - (1 each with stem).....	7.00	5.00	4.00
38	Any Other Kind	7.00	5.00	4.00
39	Lets Make a Salad - Any # above displayed.....	7.00	5.00	4.00
40	New England Boiled Dinner Group - Consist of 1 head Cabbage & 3 others above in cooking utensil.....	7.00	5.00	4.00
41	Best Basket Display - Non Commercial Garden	15.00	10.00	5.00

Best of Show Overall - Rosette & \$10.00

DEPARTMENT (L) #112 - FLORICULTURE

General Superintendent.....**Donna Walters**

Asst. Superintendent**Randy Walters**

AMOUNT OFFERED - \$1,374.00

Judging - Wednesday at 9:00 a.m. - Entry Fee - \$1.00

READ Rules governing Home Economics Department Exhibits.

Miscellaneous cut flowers by amateurs must be grown by the exhibitor and will be judged for perfection of bloom and flower. Containers will not be judged. Use foliage only belonging to flower:

NO CUT FLOWERS OR DRIED FLOWERS MAY BE DYED!!!

Judges will measure flowers for size.

All potted plants must be potted at least one month prior to the Fair.

Flowers should be renewed as needed, and plants maintained and watered by exhibitor.

Articles which have won first premiums in this department at previous Kankakee County Fairs are not eligible the next year. Must be ready to exhibit or will not be accepted.



**Dept. #112
CLASS A - CUT FLOWERS
(Fresh Blooming Flowers and don't strip leaves)**

Lot #				
1	Achilla-Yarrow - 3 stems same variety	7.00	5.00	4.00
2	Asters - any color, 3 Blooms	7.00	5.00	4.00
3	Bachelor Buttons, 3 Blooms	7.00	5.00	4.00
4	Hibiscus, 1 Stem	7.00	5.00	4.00
5	Marigolds, Lg Yellow 3 Blooms	7.00	5.00	4.00
6	Cosmos - (Any Kind)	7.00	5.00	4.00
7	Canna - 3 Blooms.....	7.00	5.00	4.00
8	Dahlias - 1 stem	7.00	5.00	4.00
9	Shasta Daisy - 3 blooms	7.00	5.00	4.00
10	Daisy - any other kind - 3 blooms	7.00	5.00	4.00
11	Gladiolus - large, 1 bloom	7.00	5.00	4.00
12	Gaillardia, 3 Blooms	7.00	5.00	4.00
13	Hollyhock - 1 Stem	7.00	5.00	4.00
14	Impatiens - 3 blooms	7.00	5.00	4.00
15	Lilies, Day - 3 blooms.....	7.00	5.00	4.00
16	Marigolds - Sm Yellow, 3 Blooms.....	7.00	5.00	4.00
17	Marigolds - All other colors, 3 Blooms.....	7.00	5.00	4.00
18	Geranium, 3 Blooms.....	7.00	5.00	4.00
19	Petunias - single - 1 color, 3 Stems	7.00	5.00	4.00
20	Petunias - double - 3 color, 3 Stems	7.00	5.00	4.00
21	Petunias - single - 3 different colors, 3 Stems	7.00	5.00	4.00
22	Phlox, 3 Blooms	7.00	5.00	4.00
23	Pinks, 3 Blooms, Dianthus	7.00	5.00	4.00
24	Roses, one variety, 3 Blooms.....	7.00	5.00	4.00
25	Roses, mixed variety, 3 Blooms	7.00	5.00	4.00
26	Roses - Mini - any color, 3 Stems	7.00	5.00	4.00
27	Salvia - blue, 3 Blooms	7.00	5.00	4.00
28	Salvia - red, 3 Blooms	7.00	5.00	4.00
29	Salvia - any other color, 3 Blooms	7.00	5.00	4.00

30	Snapdragons - bush, 3 Stems, any color.....	7.00	5.00	4.00
31	Snapdragons - giant, 3 Stems.....	7.00	5.00	4.00
32	Sunflower - largest, 1 in Bloom	7.00	5.00	4.00
33	Sunflower - small 1 in Bloom.....	7.00	5.00	4.00
34	Straw Flowers, 3 Blooms, any color.....	7.00	5.00	4.00
35	Tiger Lily, 3 Blooms	7.00	5.00	4.00
36	Verbena, 3 Blooms	7.00	5.00	4.00
37	Wildflower, 1 Bloom	7.00	5.00	4.00
38	Zinnias - small, 3 Blooms	7.00	5.00	4.00
39	Zinnias - large, 3 Blooms	7.00	5.00	4.00
40	Any other flower not listed.....	7.00	5.00	4.00

Best of Show - Rosette & \$10.00



CLASS B - ARTISTIC ARRANGEMENTS

Judged 50% of Perfection of Bloom and 50% for Arrangement and Suitability of Container:
Please Condition Your Flowers.

Completed Arrangement not to exceed 21" Wide by 27" High.

Container not to exceed 9" x 7"

Superintendent.....Sara Meyer
Asst. Superintendent.....Aimee Uphoff

41	Best Arrangement of "Wildflowers" in a Wicker Basket.....	7.00	5.00	4.00
42	Some Enchanted Evening - A Romantic Centerpiece..	7.00	5.00	4.00
43	Best Kitchen Arrangements (using utensils or kitchen accessories)	7.00	5.00	4.00
44	Best Arrangement for Porch/Patio Table	7.00	5.00	4.00
45	Most Artistic Arrangement in Attractive Bottle (10" High).....	7.00	5.00	4.00
46	Best Miniature Arrangement In a Champagne Glass (12" maximum tall)	7.00	5.00	4.00
47	Party Arrangement any type.....	7.00	5.00	4.00
48	Best Arrangement using 3 flowers in Greenery in appropriate vase.....	7.00	5.00	4.00
49	O Promise Me - A Bridal Bouquet free stand tied	7.00	5.00	4.00
50	Prairie Wind - A design Expressing Emotion.....	7.00	5.00	4.00
51	Happy Grandparent's Day.....	7.00	5.00	4.00
52	Flower and Candle Arrangement.....	7.00	5.00	4.00
53	My Garden's Best - mixed variety	7.00	5.00	4.00
54	Coffee, Tea or (Arrangement in cup, saucer)	7.00	5.00	4.00
55	Salute to Illinois - Cardinal Arrangement using all red flowers.....	7.00	5.00	4.00
56	My Favorite Color Is? Use only your favorite color....	7.00	5.00	4.00
57	Sunflower Arrangement.....	7.00	5.00	4.00
58	Sorry You're Ill - Small Arrangement	7.00	5.00	4.00
59	Pot of Gold - Arrangement of Yellow Blooms	7.00	5.00	4.00
60	Peek-a-boo, A Baby Arrangement	7.00	5.00	4.00

Best of Show - Rosette & \$10.00

CLASS C - FLOWERING PLANT

(Must be potted at least one month before the Fair) - (Specimen must be in Bloom) - 6" - 10" Pot

SuperintendentMargaret Cote

Assistant SuperintendentCassandra Hull

61	Orchid - Any Color	7.00	5.00	4.00
62	African Violet	7.00	5.00	4.00
63	Begonia - Fibrous	7.00	5.00	4.00
64	Begonia - Tuberous (Bulbs).....	7.00	5.00	4.00
65	Fuchsia	7.00	5.00	4.00
66	Geranium.....	7.00	5.00	4.00
67	Gloxinia.....	7.00	5.00	4.00
68	Impatiens	7.00	5.00	4.00
69	Any not listed above.....	7.00	5.00	4.00

CLASS D - POTTED PLANTS

(Must be potted at least one month before the Fair)

70	Airplane Plant (Spider)	7.00	5.00	4.00
71	Coleus (All on variety in same pot)	7.00	5.00	4.00
72	Coleus (3 Colors, Same Variety, Same Pot)	7.00	5.00	4.00
73	Ficus (Rubber Plant)	7.00	5.00	4.00
74	Ivy, English	7.00	5.00	4.00
75	Ivy, Swedish.....	7.00	5.00	4.00
76	Philodendron	7.00	5.00	4.00
77	Sansiveria (Snake) - Plant	7.00	5.00	4.00
78	Any not listed above.....	7.00	5.00	4.00

CLASS E - CACTUS AND SUCCULENTS

79	Cactus - Christmas, Easter, Thanksgiving, etc.....	7.00	5.00	4.00
80	Cactus - Collection of Three.....	7.00	5.00	4.00
81	Cactus - Collection of Ten.....	7.00	5.00	4.00
82	Succulent (Aloe Plant).....	7.00	5.00	4.00
83	Succulent (Hen & Chicks).....	7.00	5.00	4.00
84	Any not listed above	7.00	5.00	4.00

Best of Show Plants - Rosette & \$10.00

